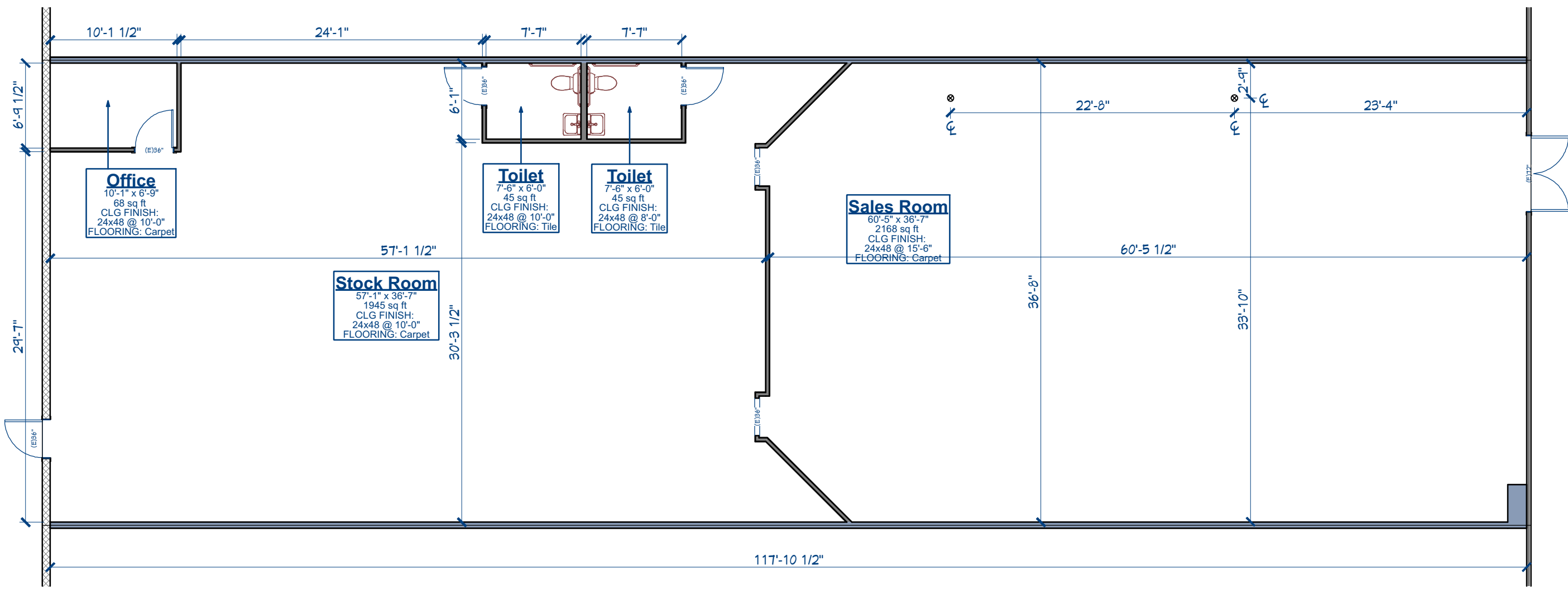


24x36 Printed: 3:34:43 PM 1/11/2021 C:\Users\WJM\OneDrive\WJM Archives\WJM 2018\18-1142 Roswell-Veiuca\18-1142 Veiuca 2020.layout

Existing Floor Plans

1. THE EXISTING FLOOR PLANS CONTAINED IN THESE DRAWINGS DEPICT THE CONDITION OF THE SPACE BASED ON A SITE VISIT ON DECEMBER 16, 2020 BY WJM DESIGNS.
2. EXISTING DIMENSIONS ARE APPROXIMATE, FIELD VERIFY BEFORE CONSTRUCTION.
3. ALLOW FOR REASONABLE TOLERANCES DUE TO CONSTRUCTION.
4. MEASUREMENTS AND DATA NOT READILY OR SAFELY ACCESSIBLE HAS BEEN ESTIMATED.



Floor Plan - Suite #4389

SCALE: 1/8" = 1'-0"
4632 SF

DRAWN:	WJM/JSM
CHECKED:	WJM
DATE:	25 DECEMBER 2020
PRINTED:	1/1/2021
JOB NO.:	18-1142

WJM
DESIGNS
678.600.9622
www.wjmdesigns.com

NEW MARKET
A Preferred Apartment Communities, Inc. Company

Roswell Veiuca Shopping Center
4365-4630 Roswell Road, NE
Atlanta, Georgia 30342

SQUARE FEET
4632 SF

SHEET
A-1
PAGE 1 of 2